

cadillac.com/cts



2012 CADILLAC CTS



CTS FAMILY

COUPE

SPORT SEDAN

SPORT WAGON

SHIELD & SAFETY

COLOR

WHEELS

SPECS

APPS

IT IS PERHAPS THE SMALLEST SPACE KNOWN TO MAN.



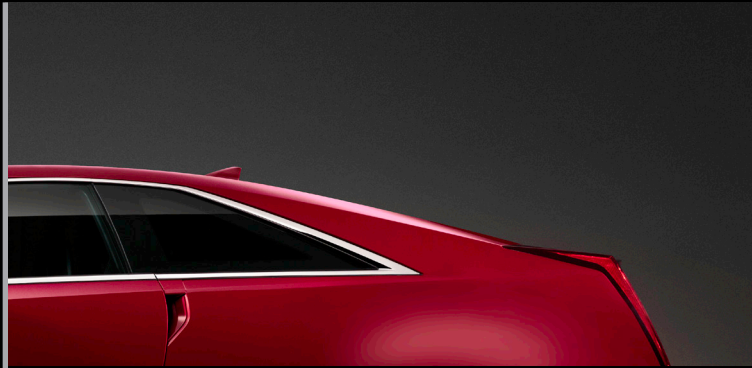
THAT RAREFIED SLIVER BETWEEN THE GOOD AND THE TRULY GREAT. THERE'S NO MAP TO HELP YOU FIND THIS ELUSIVE PLACE. THE ONLY WAY TO GET THERE IS SIMPLY TO BELIEVE YOU CAN.

At Cadillac, we've set out to create our own uniquely American breed of extraordinary. It's why we've created our own daring school of design that pushes steel way beyond its comfort zone. It's why we pioneered a suspension technology so brilliantly effective that some of the world's top supercars followed our lead. Inspired and humbled by all the great cars that came before us, we went all the way to Germany's famed Nürburgring racetrack to prove ourselves against—challenging, and ultimately surpassing—Europe's most admired sport sedans.

RED-BLOODED. DARING. ORIGINAL.

These are the kinds of luxury cars we build. It takes tenacity, a refusal to leave well enough alone. That is the difference between good and great. That is the difference between just making luxury cars, and making Cadillacs.

Discover some of the ingredients that make Cadillac The New Standard of the World and experience how each new standard leads to another at cadillac.com/newstandards »



CTS COUPE »



CTS SPORT SEDAN »



CTS SPORT WAGON »

*AN EXAMPLE OF FORM
NOT FOLLOWING ANYBODY.*

What happens when you give automotive designers carte blanche? When you strip away any preconceived notions of what a car should be? With one dramatic motion, we dispersed the old influences and simply asked, "What if?" The result is a vehicle that questions everything. The first glance tells you this is the case. The CTS has an angular silhouette that expresses a singular philosophy untouched by committees. And, with the coupe, sedan, wagon and potent V-Series models, options abound. Each is engineered to compete with—and then ultimately surpass—the world's great performance cars. Proof that not following anybody is how you become a leader.

IF YOU'RE GOING TO

MAKE A STATEMENT, DON'T MUMBLE.



When it comes to V-Coupe, everything about its design has a purpose. The brake light masterfully doubles as spoiler to significantly reduce lift at higher speeds. And up front, large grille openings force air to help improve engine cooling and feed the supercharger intercooler. Watch the video to see how the V-Coupe design influences its world-class performance.

PERFORMANCE THAT'S MORE THAN
SPEEDOMETER DEEP.





MORE POWER FOR 2012

The direct-injection 318 HP 3.6L V6 engine available in the CTS gains even more power and torque for 2012. Yet it offers the same exceptional fuel economy¹ without requiring premium fuel.

Nürburgring-TUNED CHASSIS

The V-Series chassis was developed and tested at the Nürburgring—one of the world's most demanding tracks—to challenge the world's most revered sports sedans. Watch the video and see how Cadillac engineers expertly balanced exhilarating performance with tenacious handling.

While horsepower often gets the spotlight, a truly great driver's car is a balancing act. An inspiring combination of generous power, exemplary brakes and tenacious grip. To challenge the world's best, we took the CTS to Germany's famous Nürburgring, where the world's supercars are tested and evaluated. Of course, we went for reasons other than simply watching the speedometer. We went to fine-tune the chassis and suspension on the 'Ring's treacherous curves. The result is a ride that feels firmly planted and responsive at any speed. When it comes to world-class performance, the CTS has shifted the balance in your favor.

1. Based on EPA est. mpg 18 city/27 hwy



LIGHTING BRINGS YOUR HOME TO LIFE.

WHY NOT YOUR CAR?

Something remarkable happens when you approach the interior of a luxury car not just as an engineer, but as a designer or an architect. It's why the supple surroundings of the CTS, with available ambient interior lighting, are illuminated like a fine home instead of like a car. Why the available Sapele wood positively shimmers in richness and depth. And why the instrument panel and door handles glow—lit for effect as well as ease of use. It all works together to create drama, ambience and a space as intimate as it is exhilarating.

THE WILD BRANCH
OF THE FAMILY TREE.



BADGE OF HONOR

The "V" badge is a clear signal to those in the know that something very special lurks inside.



EXTRAORDINARILY POWERFUL

The 556 HP supercharged V8 in the CTS-V Coupe, Sedan and Wagon is the stuff of legend.



Take every aspect of the CTS performance and dial it up to an even higher level and you have the world-class CTS-V Series. In fact, the CTS-V Sedan is the fastest production sedan in the world. Under their hoods is a 556 HP supercharged engine that propels the V-Coupe and V-Sedan from 0 to 60 in as fast as 3.9 seconds and the V-Wagon in a mere 4.0 seconds. Are they more car than you need? We certainly hope so.



CTS COUPE with Touring Package / Crystal Red Tintcoat



CTS COUPE

CTS FAMILY

COUPE

SPORT SEDAN

SPORT WAGON

SHIELD & SAFETY

COLOR

WHEELS

SPECS

APPS

The CTS Coupe conveys pure performance, starting with an improved 3.6L direct-injection V6 engine that now delivers an impressive 318 HP and 275 lb.-ft. of torque. Once inside the driver-focused interior, you're surrounded with advanced amenities like Bluetooth® phone connectivity,¹ an available 10-speaker Bose® 5.1 surround sound system and ingenious optional glide-up touch-screen navigation² to keep you entertained as well as informed.

LEARN MORE »

BUILD YOUR OWN »

1. Go to gm.com/bluetooth to find out which Bluetooth® phones are compatible with the vehicle. 2. Map coverage available in the United States, U.S. Virgin Islands, Puerto Rico and Canada.





ADRENALINE,
DISTILLED.

CTS COUPE / Radiant Silver

CTS FAMILY

COUPE

SPORT SEDAN

SPORT WAGON

SHIELD & SAFETY

COLOR

WHEELS

SPECS

APPS

TWO DOORS.
UNLIMITED POTENTIAL.

It's the end of engineering as usual. The deeply sculpted lines and chiseled design alone required us to rethink how to shape steel. Combined with a wide, aggressive stance and sweeping roofline, every aspect of the CTS Coupe irrefutably communicates performance.





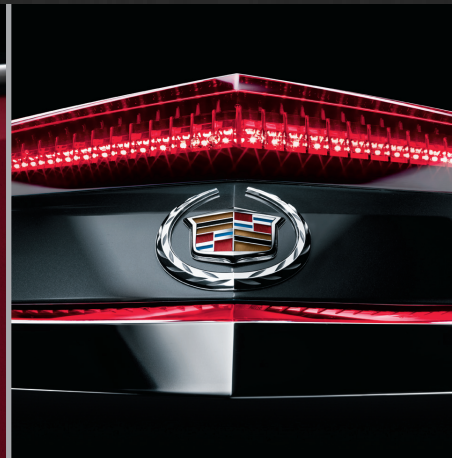
CENTER-MOUNTED EXHAUST

Chrome, center-mounted exhaust outlets are the final, dramatic exclamation point on a powerful statement.



INVISIBLE DOOR HANDLES

Ingenious hidden door handles help maintain the seamless coupe design.




INTEGRATED REAR SPOILER

The CTS-V spoiler shown here is included with the available Touring Package. Not only is it a strong visual cue, the spoiler also generates downforce for greater stability at higher speeds.



YOU SPEND A LOT OF TIME HERE.

WE OBSESSED ACCORDINGLY.

A photograph of the interior of a luxury car, focusing on the front seats. The seats are upholstered in black leather with visible stitching and a small metallic emblem on the backrest. The center console and gear shift area feature wood grain accents. The lighting is soft and focused on the seats.

Every stitch, reexamined. Every finish, closely appraised. Even the lighting was addressed with a keen eye. Because when you demand more from an interior, it shows. Details begin to come alive under the warm glow of the available ambient lighting—like the polished metal accents or the elegance of French stitching on the available supple leather seating surfaces.



FRENCH-STITCHED SEAMS



MOTORCYCLE-INSPIRED HIGH-PERFORMANCE GAUGES



AVAILABLE GLIDE-UP NAVIGATION

LET YOUR INTUITION

BE YOUR GUIDE.

Your personal command center. The the available glide-up navigation system¹ includes 10 GB of hard drive storage, 10-speaker Bose[®] 5.1 surround sound system, Bluetooth[®] phone connectivity,² USB port³ and pause-and-play radio. With this feature, you can record up to 20 minutes of your favorite music, sports event or engaging talk program, then play it back whenever you choose.

1. Map coverage available in the United States, U.S. Virgin Islands, Puerto Rico and Canada. 2. Go to gm.com/bluetooth to find out which Bluetooth[®] phones are compatible with the vehicle. 3. Not compatible with all devices.



CTS SPORT SEDAN / Thunder Gray ChromaFlair®



CTS SPORT SEDAN

CTS FAMILY

COUPE

SPORT SEDAN

SPORT WAGON

SHIELD & SAFETY

COLOR

WHEELS

SPECS

APPS

ITS BEAUTY IS MORE THAN

SHEET-METAL DEEP.



CTS SPORT SEDAN / Thunder Gray ChromaFlair®



Every drive is ready to be seared into your memory, thanks to an available 318 HP 3.6L direct-injection V6 engine paired with a 6-speed automatic with Driver Shift Control. Or the 3.0L direct-injection V6 engine with either a 6-speed automatic with Driver Shift Control or a 6-speed manual. Inside the CTS Sport Sedan, you'll find motorcycle-inspired high-performance gauges and an available glide-up navigation¹ system that includes iPod[®] connectivity, a 10-speaker Bose[®] 5.1 surround sound system and hard drive for music storage. Other available features include Rainsense wipers, keyless access and Adaptive Remote Start.

[LEARN MORE »](#)

[BUILD YOUR OWN »](#)

1. Map coverage available in the United States, U.S. Virgin Islands, Puerto Rico and Canada.

CTS FAMILY

COUPE

SPORT SEDAN

SPORT WAGON

SHIELD & SAFETY

COLOR

WHEELS

SPECS

APPS

GIVE THE ROAD

SOMETHING TO REMEMBER YOU BY.



CTS SPORT SEDAN

The determined hood, the raked-back lines and athletic stance—everything about this design is distinctive. Enhancing its bold style and driving dynamics is an available Touring Package. For the Luxury Collection, the Touring Package includes a dark-accented grille, fog lamps, chrome-accented door handles, dual-exhaust outlets and 18" aluminum wheels with Nickel Pearl finish. Premium Collection models with the Touring Package add 19" polished aluminum wheels. And in back, there's a rear spoiler shared with the world-class CTS-V.



with Touring Package / Radiant Silver Metallic



TOURING PACKAGE HIGHLIGHTS:

EXCLUSIVE GRILLE (TOP)

A distinct front grille, specific to the available Touring Package, features a dark finish for a strong performance styling cue.

V-SERIES REAR SPOILER (MIDDLE)

The available Touring Package includes the CTS-V spoiler that creates downforce for greater stability at higher speeds.

19" PERFORMANCE WHEELS (BOTTOM)

The available Premium Collection Touring Package includes boldly-styled 19" × 8.5" cast-aluminum, multi-spoke polished wheels.

*TECHNOLOGY THAT
ANTICIPATES
YOUR EVERY MOVE.*

Style and function come together brilliantly. Available Adaptive Forward Lighting uses sensors to read speed and steering angle and swivels High-Intensity Discharge (HID) headlamps up to 15 degrees to follow the direction of travel. Watch this demonstration to see Adaptive Forward Lighting in action and how it helps improve visibility, especially around curves.

CTS FAMILY

COUPE

SPORT SEDAN

SPORT WAGON

SHIELD & SAFETY

COLOR

WHEELS

SPECS

APPS



CTS SPORT SEDAN / Cashmere with Sa

METICULOUS TAILORING

SHOULDN'T BE RESERVED SIMPLY FOR CLOTHING.



Maple wood trim



RECARO® SEATING

The available Premium Collection Touring Package includes RECARO performance seating with 14-way adjustable pneumatic bolster controls and thigh extenders for driver and front passenger.



MICROFIBER SUEDED TRIM

The available Touring Package includes a microfiber suede-wrapped steering wheel that provides maximum grip during performance maneuvers.



PERFORMANCE ALLOY PEDALS

Low-profile alloy pedals are part of the available Touring Package, because no detail is too small.



CTS SPORT WAGON / Thunder Gray ChromaFlair®



CTS SPORT WAGON

CTS FAMILY

COUPE

SPORT SEDAN

SPORT WAGON

SHIELD & SAFETY

COLOR

WHEELS

SPECS

APPS



EFFECTIVELY BLURRING THE LINE BETWEEN
EMOTION AND FUNCTION.

CTS SPORT WAGON / Thunder Gray ChromaFlair®



Every chiseled line is designed to maintain the seamless profile, right down to the integrated roof rails used instead of more traditional bars. In back, signature vertical LED taillamps with light pipe technology extend up and along the liftgate for quick illumination and for pushing the CTS Sport Wagon's distinctive blend of performance and practicality farther into the left lane.

[LEARN MORE »](#)

[BUILD YOUR OWN »](#)

CTS FAMILY

COUPE

SPORT SEDAN

SPORT WAGON

SHIELD & SAFETY

COLOR

WHEELS

SPECS

APPS



LIVE A BIG LIFE?

YOUR CAR IS READY.

The CTS Sport Wagon balances sport sedan DNA, seating for five and a cargo-ready body style. Choose from a 3.0L direct-injection V6 engine with 270 HP, or a more powerful 3.6L direct-injection V6 with class-leading 318 HP, along with a choice of either rear or track-tuned All-Wheel Drive. Fold the rear seats flat and you have 58 cubic feet of flexible cargo space¹ with underfloor storage compartments for valuables. And the rear cargo area is easily accessible, thanks to a power liftgate with programmable memory height that can be programmed to clear overhead obstacles.

1. Cargo and load capacity limited by weight and distribution.



CTS FAMILY

COUPE

SPORT SEDAN

SPORT WAGON

SHIELD & SAFETY

COLOR

WHEELS

SPECS

APPS

THE PERSONALITY OF A COUPE?
THE ROOM OF A WAGON? **YES.**



CARGO STORAGE

CTS Sport Wagon accommodates your lifestyle. There's 25 cubic feet of space behind the rear seats and an additional underfloor cargo storage compartment.

Imagine the same indulgent CTS interior, now on a slightly larger scale. When you need the space, the rear seats fold flat, creating 58 cubic feet of storage. Even the floor rails are fitted with attachment points for tie-downs, and an available retractable cargo shade keeps valuable items out of sight. As you'll see, in our quest for luxury, no detail is too small.



POWER LIFTGATE WITH MEMORY HEIGHT

The power liftgate can be programmed to suit any height. Besides full-open, it can be set for a lower opening to avoid contact with a garage ceiling.



CADILLAC SHIELD

THE NEW STANDARD OF LUXURY OWNERSHIP

When we set out to create the ultimate customer experience, our goal was not only to exceed every luxury vehicle brand, but to create an experience on par with the world's greatest luxury brands. Every vehicle we sell is backed by Cadillac Shield, the most comprehensive suite of owner benefits offered by any luxury automotive brand in the world. For innovations like Remote Vehicle Diagnostics and advanced mobile apps to our Premium Care Maintenance program for 4 years/50,000 miles (whichever comes first), Cadillac Shield gives luxury owners everything they need. We invite you to visit cadillac.com/shield for more details about this exclusive owner benefits program.

LEARN MORE »

CTS FAMILY

COUPE

SPORT SEDAN

SPORT WAGON

SHIELD & SAFETY

COLOR

WHEELS

SPECS

APPS



CADILLAC SHIELD

THE NEW STANDARD OF LUXURY OWNERSHIP



PREMIUM CARE MAINTENANCE

Standard on all 2011 and newer Cadillac vehicles, Premium Care Maintenance is a fully transferable maintenance program that covers select required maintenance services during the first 4 years or 50,000 miles.¹



COURTESY TRANSPORTATION

During the warranty coverage period, this Cadillac program provides alternate transportation and/or reimbursement of certain transportation expenses if your Cadillac requires warranty repairs.



SECURITY BY ONSTAR

If you've reported your vehicle stolen, OnStar² can use its technology to help you quickly locate and recover it. On most Cadillac models, an OnStar Advisor can send a Remote Lock[®], Slowdown[®] or Remote Start Block signal to help you safely recover it.



ROADSIDE ASSISTANCE

Among leading luxury car brands, Cadillac is the only one to offer standard 5-year Roadside Assistance that provides lock-out service, a tow, fuel, Dealer Technician Roadside Service and more.



WARRANTY PROTECTION

The 5-year/100,000-mile³ Cadillac Powertrain Limited Warranty is 30,000 miles longer than Lexus and 50,000 miles longer than BMW and Mercedes-Benz. The 4-year/50,000-mile³ Bumper-to-Bumper Limited Warranty covers repairs on your entire vehicle, including parts and labor, to correct problems in materials or workmanship.



NAVIGATION BY ONSTAR

Just push the OnStar⁴ button and an Advisor can provide voice-guided turn-by-turn directions to your destination. A voice call out to Google Maps[™] or Mapcom[®], and then send your Cadillac.

1. Whichever comes first. Visit cadillac.com/owners/premium-care-maintenance.html. 2. Visit onstar.com for coverage map, details and standard for one year. 3. Whichever comes first. See dealer for details. 4. Available on Android[™] and iPhone[®] platforms. Services vary by location.

ONSTAR

your Cadillac
 use GPS
 authorities
 recover it.
 models, an
 Stolen Vehicle
 Ignition
 authorities

**DIAGNOSTICS BY ONSTAR**

With best-in-class diagnostics from OnStar,² maintaining your Cadillac can be as simple as checking your e-mail or your OnStar RemoteLink mobile app. Every month, you can receive an e-mail with the status of key operating systems.

**EMERGENCY BY ONSTAR**

In most crashes, built-in sensors can automatically alert an OnStar² Advisor who can be immediately connected in to your Cadillac to see if you need help sent to your exact location. Other OnStar² emergency services include Injury Severity Predictor and First Assist. All Cadillac models come with 1 year of OnStar² service.

ONSTAR

ar² button
 download
 y-turn
 Cadillac, and
 every turn.
 routes using
 MapQuest.
 and them to

**CONNECTIONS BY ONSTAR**

Available Hands-Free Calling capability from OnStar² allows you to make and receive calls safely from your Cadillac. With the OnStar RemoteLinkTM mobile app⁴, you can access and control your Cadillac from anywhere you have cell phone service.



The one-year Directions and Connections Plan connects you with a live OnStar Advisor who can program your requested route and have directions sent to your vehicle, or to the navigation system,² when equipped. It's just one example of the level of personal service we think you deserve as a Cadillac owner.

A HOLISTIC APPROACH TO SAFETY.



1. Before making a lane change, always check the SBZA display, check the side and inside rearview mirrors, look over your shoulder for vehicles and hazards, and start the turn signal.
2. Always use safety belts and the correct restraint for your child's age and size. Even in vehicles equipped with the Passenger Sensing System, children are safer when properly secured in a rear seat in the appropriate infant, child or booster seat. Never place a rear-facing infant restraint in the front seat of any vehicle equipped with a passenger air bag. See the Owner's Manual and child safety seat instructions for more safety information.
3. Visit onstar.com for details and system limitations. Onstar acts as a link to existing emergency service providers.



ACTIVE FRONT SEAT HEAD RESTRAINTS

They're designed to move forward and upward in a rear-end collision to decrease the space between the restraint and the occupant's head to help reduce the risk of neck injury.



SIDE BLIND ZONE ALERT

When changing lanes, this newly available system's radar¹ sweeps both sides of the CTS Coupe. When a vehicle approaches from behind and enters the radar coverage, a light in the mirror alerts you to help you move safely. It will also alert you if a vehicle merges toward you.



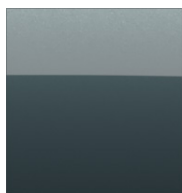
At Cadillac, we believe the best way to survive a collision is to avoid one in the first place. Active safety begins with a responsive engine, powerful brakes, and an agile suspension; to these we add the StabiliTrak Electronic Stability Control System, an advanced anti-lock braking system (ABS) and the confidence of available All-Wheel Drive (AWD). But when a collision can't be avoided,

we've engineered a rigid body structure and strategically engineered crumple zones. Peace of mind that also comes with six airbags² standard and one year OnStar³ Automatic Crash Response. In most crashes, built-in sensors can automatically alert an OnStar³ Advisor who can immediately use GPS technology to send help to your exact location. It's a lifeline to help. Even when you can't ask for it.

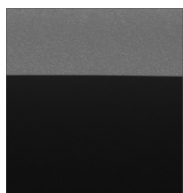
CUSTOMIZE YOUR
CTS COUPE

LOCATE A DEALER »

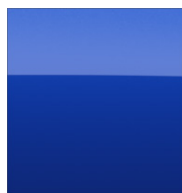
BUILD YOUR OWN »



THUNDER GRAY
CHROMAFLAIR



BLACK DIAMOND
METALLIC¹



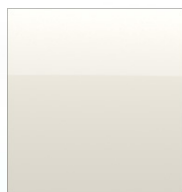
OPULENT BLUE
METALLIC



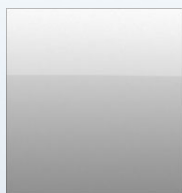
BLACK RAVEN



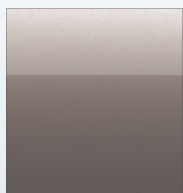
CRYSTAL RED
TINTCOAT¹



WHITE DIAMOND
TRICOAT¹



RADIANT SILVER
METALLIC



MOCHA STEEL
METALLIC



1. Available at extra cost.



PAINT FINISHES

TINTCOAT

A premium 2-layer paint application with the addition of a tinted clearcoat, lending the finish an extra depth and brightness.

TRICOAT

A meticulous 3-layer process that results in a dramatic hue-shifting color reminiscent of a show-car finish.

CHROMAFLAIR®

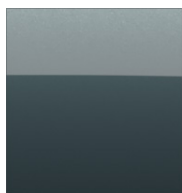
An advanced, light interference paint technology with prismatic metallic pigments to create intense, deeply lustrous color.

CUSTOMIZE YOUR

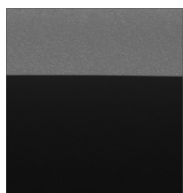
CTS SPORT SEDAN

LOCATE A DEALER »

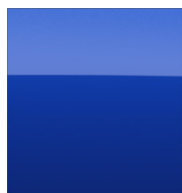
BUILD YOUR OWN »



THUNDER GRAY
CHROMAFLAIR



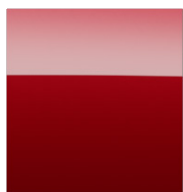
BLACK DIAMOND
METALLIC¹



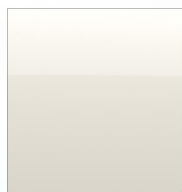
OPULENT BLUE
METALLIC



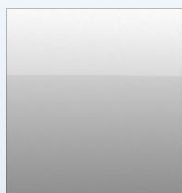
BLACK RAVEN



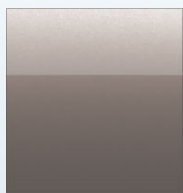
CRYSTAL RED
TINTCOAT¹



WHITE DIAMOND
TRICOAT¹



RADIANT SILVER
METALLIC



MOCHA STEEL
METALLIC



1. Available at extra cost.



PAINT FINISHES

TINTCOAT

A premium 2-layer paint application with the addition of a tinted clearcoat, lending the finish an extra depth and brightness.

TRICOAT

A meticulous 3-layer process that results in a dramatic hue-shifting color reminiscent of a show-car finish.

CHROMAFLAIR®

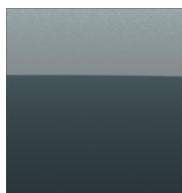
An advanced, light interference paint technology with prismatic metallic pigments to create intense, deeply lustrous color.

CUSTOMIZE YOUR

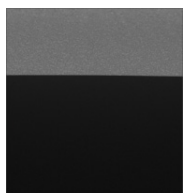
CTS SPORT WAGON

LOCATE A DEALER »

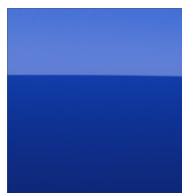
BUILD YOUR OWN »



THUNDER GRAY
CHROMAFLAIR



BLACK DIAMOND
METALLIC¹



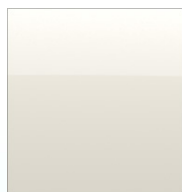
OPULENT BLUE
METALLIC



BLACK RAVEN



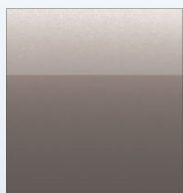
CRYSTAL RED
TINTCOAT¹



WHITE DIAMOND
TRICOAT¹



RADIANT SILVER
METALLIC



MOCHA STEEL
METALLIC



1. Available at extra cost.



PAINT FINISHES

TINTCOAT

A premium 2-layer paint application with the addition of a tinted clearcoat, lending the finish an extra depth and brightness.

TRICOAT

A meticulous 3-layer process that results in a dramatic hue-shifting color reminiscent of a show-car finish.

CHROMAFLAIR®

An advanced, light interference paint technology with prismatic metallic pigments to create intense, deeply lustrous color.

CTS INTERIOR CHOICES

LOCATE A DEALER »

BUILD YOUR OWN »



CTS SPORT SEDAN Standard in Ebony.



CTS SPORT WAGON Luxury Collection in Titanium.



CTS COUPE Premium Collection in Cashmere.



CTS SPORT SEDAN Luxury Collection in Titanium.



CTS SPORT SEDAN Premium Collection with Touring Package in Ebony.



*18" CAST ALUMINUM WHEELS WITH
PAINTED PEARL NICKEL FINISH*

Included in Luxury Collection Touring Package
(not available on Coupe)

Size: 18" x 8.5" front and rear



**17" CAST ALUMINUM WHEELS
WITH PAINTED FINISH**

Standard and with Luxury Collection on
CTS Sport Sedan and CTS Sport Wagon

Size: 17" x 8" front and rear



**18" CAST ALUMINUM WHEELS WITH
PREMIUM MULTI-COAT PAINTED
FINISH**

Standard on CTS Coupe; standard
on CTS Sport Sedan and CTS Sport
Wagon with Performance Collection

Sedan/Wagon Size: 18" x 8.5" front

Coupe size: 18" x 8.5" front/18 x 9" rear



**18" CAST ALUMINUM WHEELS
WITH HIGH-POLISHED FINISH**

Standard on Premium Collection;
available with Performance Collection

Sedan/Wagon Size: 18" x 8.5" front and rear

Coupe size: 18" x 8.5" front/18 x 9" rear



19" POLISHED ALUMINUM WHEELS

Included in the 19" Tire Performance Package
and Premium Collection Touring Package

Sedan/Wagon Size: 19" x 8.5" front

Coupe size: 19" x 8.5" front/19 x 9.5" rear

CTS COUPE

DIMENSIONS	FRONT	REAR
Head room	36.9"	34.6"
Hip room	54.5	47.7
Leg room	42.4	35.0
Shoulder room	56.0	50.9

CAPACITIES

Cargo volume	10.5 cu. ft.
Seating	4
Fuel (gal., approx.)	18.0

CTS SPORT SEDAN

DIMENSIONS	FRONT	REAR
Head room	38.8"	37.2"
Hip room	53.7	53.0
Leg room	42.4	36.1
Shoulder room	56.7	54.7

CAPACITIES

Cargo volume	13.6 cu. ft.
Seating	5
Fuel (gal., approx.)	18.0

CTS SPORT WAGON

DIMENSIONS	FRONT	REAR
Head room	38.8"	37.2"
Hip room	53.7	53.0
Leg room	42.4	36.1
Shoulder room	56.7	54.7

CAPACITIES

Cargo volume (seat up)	25.0 cu. ft.
Cargo volume (seat down)	58.0 cu. ft.
Seating	5
Fuel (gal., approx.)	18.0



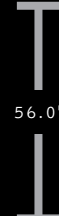
62.0"

74.1"



Wheelbase: 113.4"

Length: 188.5"



56.0"

63.0"

MODEL OVERVIEW »

BUILD YOUR OWN »



61.8"

72.5"



Wheelbase: 113.4"

Length: 191.3"



58.0"

62.3"

MODEL OVERVIEW »

BUILD YOUR OWN »



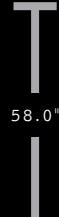
61.8"

72.5"



Wheelbase: 113.4"

Length: 192.0"



58.0"

62.3"

MODEL OVERVIEW »

BUILD YOUR OWN »

CARRY CADILLAC TECHNOLOGY

WHEREVER YOU GO



MYCADILLAC APP

The ingenuity of the CTS doesn't stop with the car. As a Cadillac owner, an advanced complimentary app is available for your new vehicle. From virtually anywhere at anytime, a few taps of your finger on your iPhone or Android Smartphone, when used in conjunction with the OnStar RemoteLink app, lets you access features like: the ability¹ to remotely start your vehicle from any place you have cell service, and lock and unlock your doors. In addition, you can access key diagnostic information, including fuel tank level and range, and remaining oil life.

1. Requires active OnStar subscription.

LEARN MORE »



SHOWROOM APP

It puts the experience of the Cadillac showroom right at your fingertips. Introducing the forward-thinking MyCadillac Showroom App. Available for iPhone and Android-based smartphones, this powerful mobile app places the Cadillac showroom in the palm of your hand. Now you can peruse Cadillac models, customize

a vehicle to your preference by changing exterior and interior colors, as well as by adding a performance package, search dealership inventory for a specific Cadillac, and more—wherever and whenever it's most convenient for you.

[LEARN MORE >>](#)



Available on the
App Store

CTS FAMILY

COUPE

SPORT SEDAN

SPORT WAGON

SHIELD & SAFETY

COLOR

WHEELS

SPECS

APPS

ABOUT THIS CATALOG

We have tried to make this catalog comprehensive and factual. We reserve the right, however, to make changes at any time, without notice, in prices, colors, materials, equipment, specifications, models and availability. Specifications, dimensions, measurements, ratings and other numbers in this catalog and other printed materials provided at the dealership or affixed to vehicles are approximates based upon design and engineering drawings and prototypes and laboratory tests. Your vehicle may differ due to variations in manufacture and equipment. Since some information may have been updated since the time of printing (11/11), please check with your Cadillac dealer for complete details. Any variations in colors shown are due to reproduction variation in the printing process. Cadillac reserves the right to lengthen or shorten the model year for any product for any reason, or start and end model years at different times. Note: Some photographs in this catalog show vehicles with optional equipment.

ONSTAR OnStar services require vehicle electrical system (including battery), wireless service and GPS satellite signals to be available and operating for features to function properly. OnStar acts as a link to existing emergency service providers. Subscription Service Agreement required. Call 1-888-4ONSTAR (466-7827) or visit onstar.com for OnStar's Terms and Conditions, Privacy Policy and details and system limitations.

ENGINES Cadillac products are equipped with engines produced by GM Powertrain or suppliers to GM worldwide. The engines in Cadillac products may also be used in other GM makes or models.

TIRE SEALANT AND COMPRESSOR KIT

Unless you option into a spare tire, there is no jack or spare tire in this vehicle. If you do not option into the spare tire, your vehicle has a tire sealant and compressor kit that uses a liquid tire sealant to temporarily seal up to a 1/4-inch puncture in the tread area of the tire. After using the inflator kit, it is recommended to take the tire to an authorized dealer for inspection and repair as soon as possible but at least within 100 miles of driving. The tire sealant cannot seal and inflate sidewall damage, punctures larger than 1/4 inch, or a tire that has unseated from the wheel. The sealant can only be used on one tire one time before its expiration date.

ASSEMBLY Cadillac vehicles and their components are assembled or produced by different operating units of General Motors, its subsidiaries or suppliers to GM worldwide. We sometimes find it necessary to produce Cadillac vehicles with different or differently sourced components than originally scheduled. Since some options may be unavailable when your vehicle is assembled, we suggest that you verify that your vehicle includes the equipment you ordered or, if there are changes, that they are acceptable to you.

UPDATED SERVICE INFORMATION Cadillac dealers receive useful service bulletins about Cadillac products. You may purchase them from Helm Incorporated by calling 1-800-551-4123 or by visiting www.helminc.com.

NEW-VEHICLE LIMITED WARRANTY World-class coverage comes standard on every 2012 Cadillac. This warranty is for Cadillac vehicles registered in the U.S.A. See your Cadillac dealer for terms and conditions.

**COVERED FOR 5 YEARS/100,000
MILES (WHICHEVER COMES FIRST)**

Powertrain Limited Warranty with no deductible, Roadside Assistance Program,¹ Courtesy Transportation Program¹

**COVERED FOR 4 YEARS/50,000
MILES (WHICHEVER COMES FIRST)**

Bumper-to-Bumper coverage; Tires – Defects in material and workmanship; Repairs made to correct any vehicle defect; Corrosion on body sheet metal panels

RUST THROUGH PROTECTION Cadillac vehicles are designed and built to resist corrosion and rust-through corrosion. Any body sheet metal that rusts through (in the form of an actual hole in the sheet metal) is covered for six years unlimited mileage. Cosmetic or surface corrosion, resulting from stone chips or scratches in the paint, for example, is not included in the Rust Through coverage. Application of additional rust-inhibiting materials is not required under the Rust Through coverage and none is recommended. See your Cadillac dealer for terms of this limited warranty.

FLEET ORDERS Some standard content may be deleted with fleet orders. See dealer for details.

1. Roadside Assistance Program and Courtesy Transportation Program are not a part of the New Vehicle Limited Warranty. A separate booklet entitled "Warranty and Owner Assistance Information" furnished with each new vehicle provides detailed warranty coverage information. GM, the GM emblem, Cadillac, the Cadillac badge, OnStar, the OnStar emblem and the slogans, emblems, vehicle model names, vehicle body designs and other marks appearing in this catalog are the trademarks and/or service marks of General Motors, its subsidiaries, affiliates or licensors. iPod is a registered trademark of Apple, Inc. ©2011 General Motors. All rights reserved.