

cadillac.com/escalade



2012 CADILLAC ESCALADE



ESCALADE FAMILY

ESCALADE

HYBRID

ESV

EXT

COLLECTIONS

SHIELD & SAFETY

COLOR

WHEELS

SPECS

APPS

IT IS PERHAPS THE SMALLEST SPACE KNOWN TO MAN.





THAT RAREFIED SLIVER BETWEEN THE GOOD AND
THE TRULY GREAT. THERE'S NO MAP TO HELP YOU
FIND THIS ELUSIVE PLACE. THE ONLY WAY TO GET
THERE IS SIMPLY TO BELIEVE YOU CAN.

At Cadillac, we've set out to create our own uniquely American breed of extraordinary. It's why we've created our own daring school of design that pushes steel way beyond its comfort zone. It's why we pioneered a suspension technology so brilliantly effective that some of the world's top supercars followed our lead. Inspired and humbled by all the great cars that came before us, we went all the way to Germany's famed Nürburgring racetrack to prove ourselves against—challenging, and ultimately surpassing—Europe's most admired sport sedans.

RED-BLOODED. DARING. ORIGINAL.

These are the kinds of luxury cars we build. It takes tenacity, a refusal to leave well enough alone. That is the difference between good and great. That is the difference between just making luxury cars, and making Cadillacs.

Discover some of the ingredients that make Cadillac The New Standard of the World and experience how each new standard leads to another at cadillac.com/newstandards »



ESCALADE »



ESCALADE HYBRID »





ESCALADE ESV »



ESCALADE EXT »

HOW ICONS BECOME ICONS.

Maybe it's the fact that they are instantly recognizable. Or that they come with a larger-than-life presence. But to really define what creates an icon, you have to dig deeper. And that's where the Escalade cements its status. By any measure—power, performance or technological sophistication—it continues to redefine the category. The new Escalade Premium Collection is only the latest chapter in its storied run. It all adds up to the most acclaimed luxury SUV ever. After all, if you're going to be an icon in this world, you'd better be able to back it up.



ESCALADE LUXURY COLLECTION / Black Raven



ESCALADE

ESCALADE FAMILY

ESCALADE

HYBRID

ESV

EXT

COLLECTIONS

SHIELD & SAFETY

COLOR

WHEELS

SPECS

APPS

What happens when you adhere to a singular point of view instead of subscribing to the masses? The outcome is pure Escalade. From its dramatic grille to its signature LED vertical taillamps, its monumental presence has made Escalade an icon. Its 6.2L Vortec V8 engine produces 403 HP so you can pass, tow or merge with the utmost confidence. The engine uses cylinder deactivation technology to seamlessly deactivate up to four cylinders at cruising speeds for improved fuel efficiency.¹ Inside the beautifully appointed cabin, the thoughtful controls are as easy to enjoy as they are to use. It all adds up to one fully realized vision: an SUV experience unlike any other on the road.

LEARN MORE »

BUILD YOUR OWN »

1. Escalade RWD: EPA-estimated MPG 14 city / 18 hwy. Escalade AWD: EPA-estimated MPG 13 city / 18 hwy.



*DESIGNED BY COMMITMENT,
NOT COMMITTEE.*

ESCALADE FAMILY

ESCALADE

HYBRID

ESV

EXT

COLLECTIONS

SHIELD & SAFETY

COLOR

WHEELS

SPECS

APPS

THE EIGHT

BEST SEATS IN THE HOUSE.



ESCALADE PREMIUM COLLECTION / Cashmere / Cocoa



BOSE® SURROUND SOUND SYSTEM

It begins with 10 speakers, then adds AudioPilot® noise compensation technology that automatically adjusts the volume based on exterior noise to enhance the already rich sound quality.



No matter where you're seated, you're surrounded. The Escalade not only elevates the definition of "well appointed," but also gives you ample space for up to eight adults. The interior flows seamlessly, punctuated by French-stitched leather accents on the instrument panel and door trim. The seats alone are a rare combination of elegance and engineering: 14-way power-adjustable front seats with heated and cooled seatbacks and cushions, plus a driver's seat that includes memory settings for two drivers. Once you slip behind the wheel, there's little doubt you are front and center at the most compelling show on the road.

BEAUTIFUL? BRILLIANT? BOTH.

The interior comes with a level of intellect to rival its impressive luxury. Heated seats greet you on chilly mornings, courtesy of Adaptive Remote Start. Once inside, tri-zone climate controls let the driver and front and rear passengers set their own desired temperatures. All of this creates the perfect environment to enjoy the Bose® 5.1 surround sound system and SiriusXM Radio with 3-month trial.¹ Never has so much beauty been in the eyes, ears and hands of the beholder. Watch the video to see how Escalade's luxurious features can be customized for the ultimate driving experience.



REARVIEW CAMERA

The rearview camera turns on automatically when the vehicle is placed into reverse. It displays a live image of the area behind the vehicle on the navigation screen and includes guiding lines to help you when backing up.



SIDE BLIND ZONE ALERT²

Available Side Blind Zone Alert uses radar that sweeps the sides of Escalade. If a vehicle enters your blind spots, an alert warns you of its presence.



ADAPTIVE REMOTE START

From up to half of a football field away, the Escalade engine can be started and the interior heated or cooled, depending on the outside temperature.

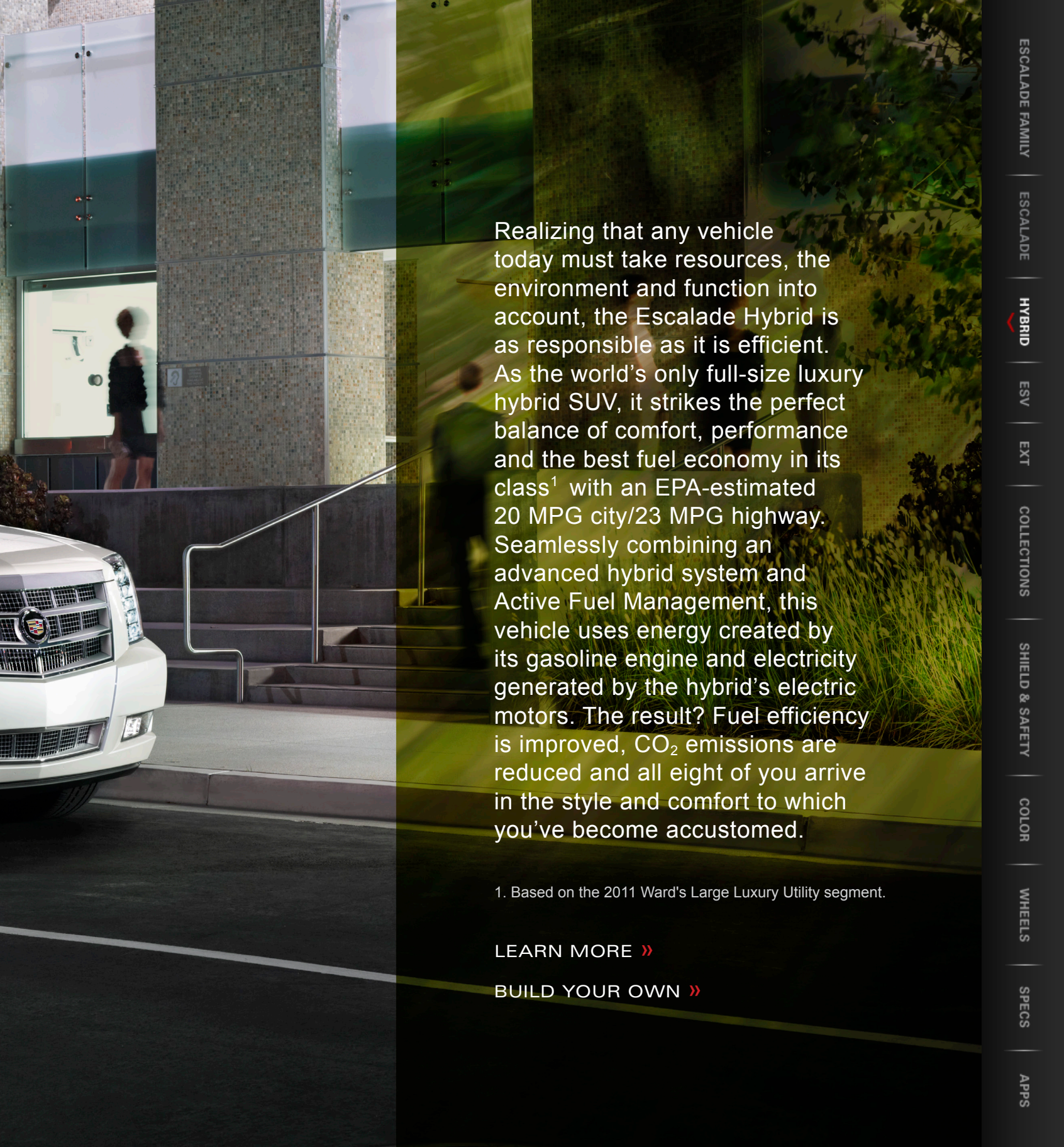
1. Requires a subscription, sold separately by SiriusXM after the trial period. SiriusXM Radio service only available in the 48 contiguous United States and the District of Columbia. For more information and to view Customer Agreement, visit siriusxm.com.
2. Before making a lane change, always check the SBZA display, check the side and inside rear mirrors, look over your shoulder for vehicles and hazards, and start the turn signal.



AN EFFICIENT HYBRID

DISGUISED AS A FULL-SIZE LUXURY SUV.

ESCALADE HYBRID PLATINUM EDITION / White Diamond Tricoat



Realizing that any vehicle today must take resources, the environment and function into account, the Escalade Hybrid is as responsible as it is efficient. As the world's only full-size luxury hybrid SUV, it strikes the perfect balance of comfort, performance and the best fuel economy in its class¹ with an EPA-estimated 20 MPG city/23 MPG highway. Seamlessly combining an advanced hybrid system and Active Fuel Management, this vehicle uses energy created by its gasoline engine and electricity generated by the hybrid's electric motors. The result? Fuel efficiency is improved, CO₂ emissions are reduced and all eight of you arrive in the style and comfort to which you've become accustomed.

1. Based on the 2011 Ward's Large Luxury Utility segment.

[LEARN MORE »](#)

[BUILD YOUR OWN »](#)

ESCALADE FAMILY

ESCALADE

 HYBRID

ESV

EXT

COLLECTIONS

SHIELD & SAFETY

COLOR

WHEELS

SPECS

APPS



ESCALADE

ESCALADE HYBRID TECHNOLOGY



Combining an advanced hybrid system and Active Fuel Management, the Escalade Hybrid runs on two types of power—energy created by its gas engine and electricity from electric motors.

ESCALADE FAMILY

ESCALADE

HYBRID

ESV

EXT

COLLECTIONS

SHIELD & SAFETY

COLOR

WHEELS

SPECS

APPS



ESCALADE ESV PREMIUM COLLECTION / Black Raven



ESCALADE ESV

ESCALADE FAMILY

ESCALADE

HYBRID

 ESV

EXT

COLLECTIONS

SHIELD & SAFETY

COLOR

WHEELS

SPECS

APPS

*FOR THOSE WHO BELIEVE
SPACE IS THE ULTIMATE LUXURY.*



ESCALADE ESV LUXURY COLLECTION / Black Raven

1. Cargo and load capacity limited by weight and distribution.
2. Before making a lane change, always check the SBZA display, check the side and inside rear mirrors, look over your shoulder for vehicles and hazards, and start the turn signal.

Leading a bigger life? The ESV gives you additional room, refinement and technology to match. The extended wheelbase adds length (20" longer than the Escalade) that provides space for seating up to eight adults and even more cargo.¹ With its advanced Road Sensing Suspension and automatic rear level control, it also handles like nothing else its size. Navigating parking lots is effortless, while available Side Blind Zone Alert²—built into the exterior rearview mirrors—gives you an extra set of eyes, alerting you when another vehicle has entered your blind spot. In total, the ESV represents more of everything the Escalade is famous for.

LEARN MORE »

BUILD YOUR OWN »



POWER LIFTGATE

The power liftgate can be opened or closed using either the vehicle remote key fob or a switch in the overhead console. Additional controls on the liftgate allow one-finger operation from the back, as well.



ALL SEATS IN PLACE

With its additional length versus Escalade, ESV seats up to eight (seven-passenger configuration shown), plus offers 45.8 cubic feet of space¹ behind the third row.

THIRD-

For a b
cargo r
simply
shown

MORE SPACE.

MORE ELEGANTLY APPOINTED.



THIRD ROW SEATS REMOVED

Best-in-class 137.4 cubic feet of room,¹ remove the third-row seat and fold the second-row seats (image with second-row seats upright).



EASE OF ENTRY

All it takes is the touch of a button to make the second row fold forward, making it easier for rear passengers to enter.

Glance inside the Escalade ESV, and you'll admire not only its leather and burled accents, but also its ability to get to work with little wasted motion—and even an ingenious shortcut or two. It offers the most cargo room in its class. In fact, almost 30 additional cubic feet of room compared to the regular-wheelbase Escalade. The reclining second-row bucket seats have heated

cushions and a fold-and-tumble design that lets them disappear quickly. The third row features 50/50 split-bench seats that adjust individually and can be folded, tumbled forward or totally removed, depending on your needs. Of course, thanks to the power liftgate, accessing all that space is effortless, exactly as you'd expect.

1. Cargo and load capacity limited by weight and distribution.



ESCALADE EXT PREMIUM COLLECTION / Black Raven



ESCALADE EXT

ESCALADE FAMILY

ESCALADE

HYBRID

ESV

EXT

COLLECTIONS

SHIELD & SAFETY

COLOR

WHEELS

SPECS

APPS

*ITS UTILITY GETS OVERLOOKED.
FOR OBVIOUS REASONS.*



ESCALADE EXT PREMIUM COLLECTION / Black Raven

1. Cargo and load capacity limited by weight and distribution.
2. Map coverage available in the United States, U.S. Virgin Islands, Puerto Rico, and Canada.
3. Requires a subscription, sold separately by SiriusXM after the trial period. SiriusXM Radio service only available in the 48 contiguous United States and the District of Columbia. For more information and to view Customer Agreement, visit siriusxm.com.



MIDGATE® PANEL

Fold the Midgate forward with the rear window in place to create 101 cubic feet¹ of covered and secure cargo volume.



TOW/HAUL MODE

Trailer with confidence. Tow/Haul mode, when activated, reduces transmission shifts by holding a gear longer when accelerating or decelerating. This helps improve trailering performance, especially when navigating steep hills and mountain passes.

The style is a given, but there are days when there's furniture to be picked up or a vintage motorcycle to be hauled. In an instant, you can access an 8-foot bed and 101 cubic feet¹ of covered, secure cargo space just by folding the Midgate® panel forward. Inside, the list of refinements could fill its spacious cargo bed. Start with 14-way power-adjustable front seats with leather seating surfaces. A navigation system² that responds to your touch includes a premium Bose® 5.1 surround sound system, SiriusXM Radio with 3-month trial³ and iPod integration. The interior is so indulgently luxurious, you may forget all about the cargo bed behind you. That is, until you need it.

LEARN MORE »

BUILD YOUR OWN »



ESCALADE ESV PREMIUM COLLECTION / Black Raven



COLLECTIONS

ESCALADE FAMILY

ESCALADE

HYBRID

ESV

EXT

COLLECTIONS

SHIELD & SAFETY

COLOR

WHEELS

SPECS

APPS

THE NEW PREMIUM COLLECTION:

SAY EVERYTHING

WITHOUT SAYING ANYTHING.



ESCALADE PREMIUM COLLECTION / Black Raven



INTEGRATED DUAL-OUTLET EXHAUST

The dual-outlet stainless-steel exhaust's bold, rectangular tips are seamlessly integrated into the rear bumper.



22" WHEELS

The Escalade Premium is accented by 22" 7-spoke ultra-bright machined-finish aluminum wheels with premium painted accents.



It wasn't *handed* the title of the most acclaimed luxury SUV ever—it *earned* it. And now, the Escalade is enhanced with the available Premium Collection. And it comes with technology that's equally stunning—including Magnetic Ride Control suspension that reads the road at 1,000 times per second and instantly adjusts for a nearly flawless ride. Other Premium Collection features include power-retractable assist steps that help with entry, then retract seamlessly when not in use. Available LED headlamps with IntelliBeam technology turn the high beams on automatically, and then switch to low beams when oncoming headlamps are detected. In every detail, the Escalade Premium Collection makes an already powerful statement even more powerful.

LEARN MORE »

BUILD YOUR OWN »

PLATINUM EDITION:
WHEN LUXURY IS
AN ABSOLUTE NECESSITY.



ESCALADE PLATINUM EDITION / Cocoa / Very Light Linen



DISTINCTIVE FRONT END TREATMENT

LED headlamps and the distinctive Platinum grille, emblazoned with the Wreath and Crest emblem, are remarkably Cadillac.



TEHĀMA LEATHER SEATING

The front seats are heated and cooled and feature supple TEHĀMA¹ full leather first and second-row seats with embroidered Cadillac Wreath and Crest.



DUAL DVD PLAYERS

Escalade Platinum thoughtfully considers rear passengers with dual independent DVD players in the back of the front head restraints that provide hours of entertainment.

If you are of the mind that you can never have too much of a good thing, your vehicle has arrived. The Escalade Platinum. It's the ultimate expression of Escalade luxury and refinement. Experience the richness of glove-soft TEHĀMA full-leather, 14-way power-adjustable heated and cooled front seats. The fine craftsmanship is evident in the French-stitched leather-wrapped instrument panel top pad and upper door trim, as well as the distinctive grain in the olive ash and burled walnut wood trim with decorative inlays. The Platinum is the most luxurious Escalade we have ever made. And given our history, that's a considerable achievement.

1. The TEHĀMA trademark is used under license by General Motors.

0-60

IN YOU WON'T

BELIEVE IT.

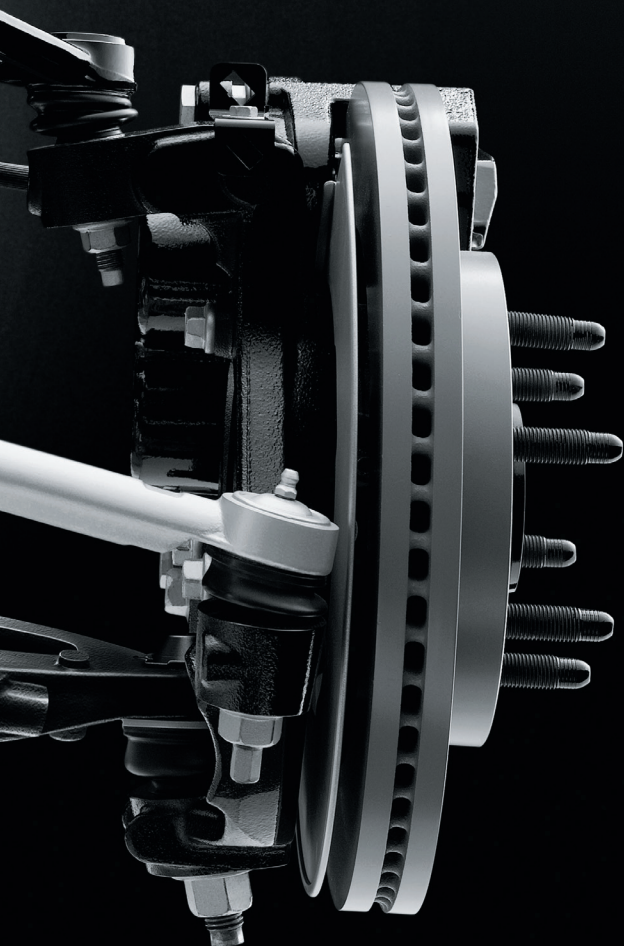
In some ways, it defies logic: A full-size luxury SUV that's quicker than the smaller and lighter Mercedes-Benz C300 Sport Sedan.¹ Adding to its formidable presence on the road, the Escalade's 403 HP 6.2L V8 creates a vehicle with immense power at your disposal. Its 6-speed automatic transmission delivers smooth, responsive shifts and includes Tow/Haul mode for those times when you have a trailer. And a rear locking differential and available All-Wheel Drive get all this power to the pavement with confidence. When all is said and done, there is enough brawn under the hood to turn any driving situation in your favor. You can't get much more logical, or sensible, than that. Watch the video and witness how effortlessly the Escalade takes on the Mercedes-Benz C300 Sport Sedan.

1. With automatic transmission.



IT MEASURES THE ROAD
1,000 TIMES A SECOND.

DON'T BLINK, OR YOU'LL MISS IT.



With available Magnetic Ride Control, in the time it takes you to blink, your Escalade has monitored the road 1,000 times. It's an ingenious suspension technology that employs minute iron particles suspended in a synthetic fluid. As the Escalade reads the road, the particles react to a magnetic charge and instantly align to provide the proper damping. It's an innovative approach that lets you enjoy every millisecond of the ride.

ESCALADE FAMILY

ESCALADE

HYBRID

ESV

EXT

COLLECTIONS

SHIELD & SAFETY

COLOR

WHEELS

SPECS

APPS



CADILLAC SHIELD

THE NEW STANDARD OF LUXURY OWNERSHIP

When we set out to create the ultimate customer experience, our goal was not only to exceed every luxury vehicle brand, but to create an experience on par with the world's greatest luxury brands. Every vehicle we sell is backed by Cadillac Shield, the most comprehensive suite of owner benefits offered by any luxury automotive brand in the world. For innovations like Remote Vehicle Diagnostics and advanced mobile apps to our Premium Care Maintenance program for 4 years/50,000 miles (whichever comes first), Cadillac Shield gives luxury owners everything they need. We invite you to visit cadillac.com/shield for more details about this exclusive owner benefits program.

LEARN MORE »

ESCALADE FAMILY

ESCALADE

HYBRID

ESV

EXT

COLLECTIONS

SHIELD & SAFETY

COLOR

WHEELS

SPECS

APPS





CADILLAC SHIELD

THE NEW STANDARD OF LUXURY OWNERSHIP



PREMIUM CARE MAINTENANCE

Standard on all 2011 and newer Cadillac vehicles, Premium Care Maintenance is a fully transferable maintenance program that covers select required maintenance services during the first 4 years or 50,000 miles.¹



COURTESY TRANSPORTATION

During the warranty coverage period, this Cadillac program provides alternate transportation and/or reimbursement of certain transportation expenses if your Cadillac requires warranty repairs.



SECURITY BY ONSTAR

If you've reported your vehicle stolen, OnStar² can use its technology to help you quickly locate and recover it. On most Cadillac models, the OnStar Advisor can send a Remote Lock³, Slowdown⁴ or Remote Stop⁴ signal to help you safely recover it.



ROADSIDE ASSISTANCE

Among leading luxury car brands, Cadillac is the only one to offer standard 5-year Roadside Assistance that provides lock-out service, a tow, fuel, Dealer Technician Roadside Service and more.



WARRANTY PROTECTION

The 5-year/100,000-mile³ Cadillac Powertrain Limited Warranty is 30,000 miles longer than Lexus and 50,000 miles longer than BMW and Mercedes-Benz. The 4-year/50,000-mile³ Cadillac Bumper-to-Bumper Limited Warranty covers repairs on your entire vehicle, including parts and labor, to correct problems in materials or workmanship.



NAVIGATION BY ONSTAR

Just push the OnStar² button and an Advisor can provide voice-guided turn-by-turn directions to your destination. Or, a voice will call out to you. You can also plan routes using Google MapsTM or MapboxTM, and then send the route to your Cadillac.

1. Whichever comes first. Visit cadillac.com/owners/premium-care-maintenance.html. 2. Visit onstar.com for coverage map, details and system requirements. 3. Whichever comes first. See dealer for details. 4. Available on AndroidTM and iPhone[®] platforms. Services vary by location.

OnStar
your Cadillac
use GPS
authorities
recover it.
models, an
Stolen Vehicle
ote Ignition
o authorities



DIAGNOSTICS BY ONSTAR

With best-in-class diagnostics from OnStar,² maintaining your Cadillac can be as simple as checking your e-mail or your OnStar RemoteLink mobile app. Every month, you can receive an e-mail with the status of key operating systems.



EMERGENCY BY ONSTAR

In most crashes, built-in sensors can automatically alert an OnStar² Advisor who can be immediately connected in to your Cadillac to see if you need help sent to your exact location. Other OnStar² emergency services include Injury Severity Predictor and First Assist. All Cadillac models come with 1 year of OnStar² service.



CONNECTIONS BY ONSTAR

Available Hands-Free Calling capability from OnStar² allows you to make and receive calls safely from your Cadillac. With the OnStar RemoteLinkTM mobile app⁴, you can access and control your Cadillac from anywhere you have cell phone service.



The one-year Directions and Connections Plan connects you with a live OnStar Advisor who can program your requested route and have directions sent to your vehicle, or to the navigation system,² when equipped. It's just one example of the level of personal service we think you deserve as a Cadillac owner.

A HOLISTIC APPROACH TO SAFETY.



1. Always use safety belts and the correct restraint for your child's age and size. Even in vehicles equipped with the Passenger Sensing System, children are safer when properly secured in a rear seat in the appropriate infant, child or booster seat. Never place a rear-facing infant restraint in the front seat of any vehicle equipped with a passenger air bag. See the Owner's Manual and child safety seat instructions for more safety information.
2. Visit onstar.com for details and system limitations. OnStar acts as a link to existing emergency service providers.



At Cadillac, we believe the best way to survive a collision is to avoid one in the first place. Active safety begins with a responsive engine, powerful brakes and an agile suspension; to these we add the StabiliTrak Electronic Stability Control System, an advanced anti-lock braking system (ABS) and the confidence of available All-Wheel Drive (AWD). But when a collision can't be avoided, we've engineered a rigid body

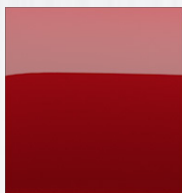
structure and strategically engineered crumple zones. Peace of mind also comes with six airbags¹ standard and one year OnStar² Automatic Crash Response. In most crashes, built-in sensors can automatically alert an OnStar² Advisor who can immediately use GPS technology to send help to your exact location. It's a lifeline to help. Even when you can't ask for it.

CUSTOMIZE YOUR

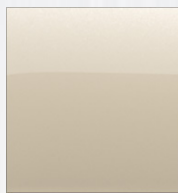
ESCALADE / ESCALADE ESV EXTERIOR

LOCATE A DEALER »

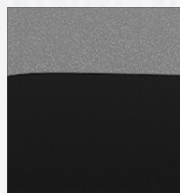
BUILD YOUR OWN »



CRYSTAL RED
TINTCOAT¹



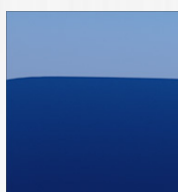
GOLD MIST
METALLIC



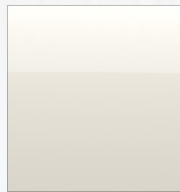
BLACK ICE
METALLIC¹



BLACK RAVEN



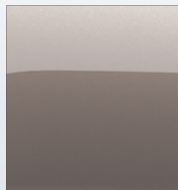
XENON BLUE
METALLIC



WHITE DIAMOND
TRICOAT¹



RADIANT SILVER
METALLIC



MOCHA STEEL
METALLIC



1. Available at extra cost.



PAINT FINISHES

TINTCOAT

A premium 2-layer paint application with the addition of a tinted clearcoat, lending the finish an extra depth and brightness.

TRICOAT

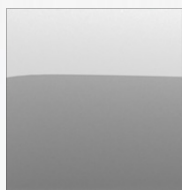
A meticulous 3-layer process that results in a dramatic hue-shifting color reminiscent of a show-car finish.

CUSTOMIZE YOUR

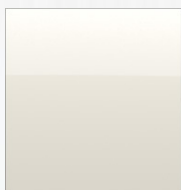
ESCALADE EXT EXTERIOR

LOCATE A DEALER »

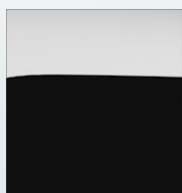
BUILD YOUR OWN »



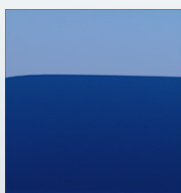
RADIANT SILVER
METALLIC



WHITE DIAMOND
TRICOAT¹



BLACK RAVEN



XENON BLUE
METALLIC²

1. Available at extra cost.

2. Available Spring 2012.



PAINT FINISHES

TINTCOAT

A premium 2-layer paint application with the addition of a tinted clearcoat, lending the finish an extra depth and brightness.

TRICOAT

A meticulous 3-layer process that results in a dramatic hue-shifting color reminiscent of a show-car finish.

ESCALADE FAMILY

ESCALADE

HYBRID

ESV

EXT

COLLECTIONS

SHIELD & SAFETY

 COLOR

WHEELS

SPECS

APPS

ESCALADE INTERIOR CHOICES

LOCATE A DEALER »

BUILD YOUR OWN »



ESCALADE AND ESCALADE ESV Platinum Edition in Ebony



ESCALADE AND ESCALADE ESV Premium Collection in Cashmere with Cocoa



ESCALADE EXT *Luxury Collection in Ebony*



ESCALADE HYBRID *Platinum Edition in Cocoa with Very Light Linen*



*22" x 9" 7-SPOKE ULTRA-
BRIGHT MACHINED-FINISH
ALUMINUM WHEELS WITH
PAINTED ACCENTS*

Standard on Escalade and
Escalade ESV Premium models.
Includes P285/45R22 blackwall
performance all-season tires



*18" × 8" 7-SPOKE
ALUMINUM WHEELS
WITH MACHINED FINISH*

Standard on Escalade
and includes P265/65R18
blackwall all-season tires



*22" × 9" 7-SPOKE CHROMED
ALUMINUM WHEELS*

Included with P285/45R22
blackwall performance all-
season tires. (Standard on
Luxury Collection, and Hybrid)



*22" × 9" 7-SPOKE CHROMED
ALUMINUM WHEELS*

Standard on Escalade Platinum
models. Includes P285/45R22
all-season tires

ESCALADE

CAPACITIES — Maximum payload ¹ /trailer weight ²	
RWD	1,555 lbs./8,300 lbs.
AWD	1,577 lbs./8,100 lbs.

MAXIMUM CARGO AREA ³	
Volume	108.9 cu. ft.

ESCALADE HYBRID

CAPACITIES — Maximum payload ¹ /trailer weight ²	
RWD	1,429 lbs./5,800 lbs.
4WD	1,351 lbs. /5,600 lbs.

MAXIMUM CARGO AREA ³	
Volume	108.9 cu. ft.

ESCALADE ESV

CAPACITIES — Maximum payload ¹ /trailer weight ²	
RWD	1,414 lbs./8,000 lbs.
AWD	1,418 lbs./7,700 lbs.

MAXIMUM CARGO AREA ³	
Volume	137.4 cu. ft.

ESCALADE EXT

CAPACITY — Maximum payload ¹ /trailer weight ²	
AWD	1,230 lbs./7,600 lbs.

CARGO AREA ³ DIMENSIONS	
Height	25.0"
Length at Midgate, up	63.0
Length at Midgate, down	97.6
Width	50.0
Cargo volume, bed only	45.5 cu. ft.
Cargo volume ⁴ , with Midgate down and tonneau covers installed	101.0 cu. ft.

1. Maximum payload capacity includes weight of driver, passengers, optional equipment and cargo. 2. Maximum trailer-weight ratings are calculated with no passengers and cargo. Additional passengers and cargo will reduce the maximum trailer weight your vehicle can tow. See your Cadillac dealer for additional details. 3. Cargo and load capacity limited by weight and distribution. Always use proper tie-down technique. 4. Cargo and load capacity limited by weight and distribution. Always use proper tie-down technique.



68.2"
79.0"

MODEL OVERVIEW »



Wheelbase: 116.0"
Length: 202.5"

BUILD YOUR OWN »



75.9"

67.0"



68.2"
79.0"

MODEL OVERVIEW »



Wheelbase: 116.0"
Length: 202.5"

BUILD YOUR OWN »



75.9"

67.0"



68.2"
79.1"

MODEL OVERVIEW »



Wheelbase: 130.0"
Length: 222.9"

BUILD YOUR OWN »



74.5"

67.0"



68.2"
79.1"

MODEL OVERVIEW »



Wheelbase: 130.0"
Length: 222.0"

BUILD YOUR OWN »



75.5"

67.0"

ESCALADE FAMILY

ESCALADE

HYBRID

ESV

EXT

COLLECTIONS

SHIELD & SAFETY

COLOR

WHEELS

SPECS

APPS

ed assuming a base vehicle, except for any option(s) necessary to achieve the rating, plus driver. The weight of other optional equipment, ad capacity limited by weight and distribution. 4. Cargo volume measured behind first-row seating with second-row seats folded.

CARRY CADILLAC TECHNOLOGY

WHEREVER YOU GO.



MYCADILLAC APP

The ingenuity of the Escalade doesn't stop with the vehicle. As a Cadillac owner, an advanced complimentary app is available for your new SUV. From virtually anywhere at anytime, a few taps of your finger on your iPhone or Android Smartphone, when used in conjunction with the OnStar RemoteLink app, lets you access features like the ability¹ to remotely start your vehicle from any place you have cell service, and lock and unlock your doors. In addition, you can access key diagnostic information, including fuel tank level and range, and remaining oil life.

1. Requires active OnStar subscription.

LEARN MORE »

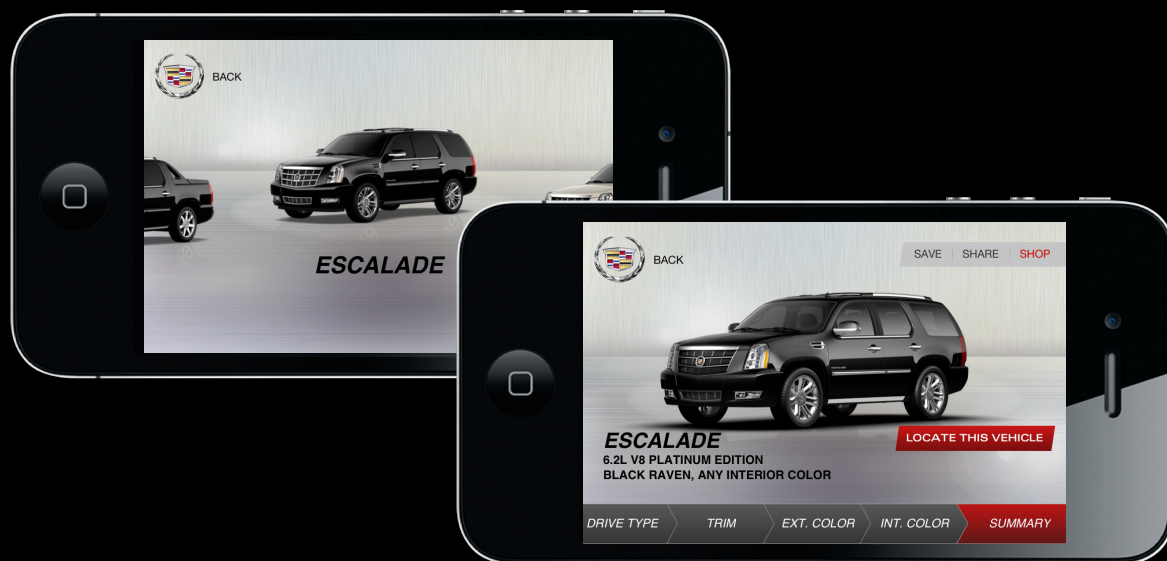


SHOWROOM APP

It puts the experience of the Cadillac showroom right at your fingertips. Introducing the forward-thinking myCadillac Showroom App. Available for iPhone and Android-based Smartphones, this powerful mobile app places the Cadillac showroom in the palm of your hand. Now you can peruse Cadillac

models, customize a vehicle to your preference by changing exterior and interior colors, add a performance package, search dealership inventory for a specific Cadillac, and more—wherever and whenever it's most convenient for you.

[LEARN MORE »](#)



Available on the
App Store

ESCALADE FAMILY

ESCALADE

HYBRID

ESV

EXT

COLLECTIONS

SHIELD & SAFETY

COLOR

WHEELS

SPECS

APPS

ABOUT THIS CATALOG

We have tried to make this catalog comprehensive and factual. We reserve the right, however, to make changes at any time, without notice, in prices, colors, materials, equipment, specifications, models and availability. Specifications, dimensions, measurements, ratings and other numbers in this catalog and other printed materials provided at the dealership or affixed to vehicles are approximates based upon design and engineering drawings and prototypes and laboratory tests. Your vehicle may differ due to variations in manufacture and equipment. Since some information may have been updated since the time of printing (11/11), please check with your Cadillac dealer for complete details. Any variations in colors shown are due to reproduction variation in the printing process. Cadillac reserves the right to lengthen or shorten the model year for any product for any reason, or start and end model years at different times. Note: Some photographs in this catalog show vehicles with optional equipment.

ONSTAR

OnStar services require vehicle electrical system (including battery), wireless service and GPS satellite signals to be available and operating for features to function properly. OnStar acts as a link to existing emergency service providers. Subscription Service Agreement required. Call 1-888-4ONSTAR (466-7827) or visit onstar.com for OnStar's Terms and Conditions, Privacy Policy and details and system limitations.

ENGINES

Cadillac products are equipped with engines produced by GM Powertrain or suppliers to GM worldwide. The engines in Cadillac products may also be used in other GM makes or models.

TIRE SEALANT AND COMPRESSOR KIT

Depending on the model and collection you choose, your vehicle will either come with a full-size spare tire or a tire inflation kit (the kit does not include a jack or spare tire). The tire sealant and compressor kit uses a liquid tire sealant to temporarily seal up to a 1/4-inch puncture in the tread area of the tire. After using the inflator kit, it is recommended to take the tire to an authorized dealer for inspection and repair as soon as possible but at least within 100 miles of driving. The tire sealant cannot seal and inflate sidewall damage, punctures larger than 1/4 inch, or a tire that has unseated from the wheel. The sealant can only be used on one tire one time before its expiration date.

ASSEMBLY

Cadillac vehicles and their components are assembled or produced by different operating units of General Motors, its subsidiaries or suppliers to GM worldwide. We sometimes find it necessary to produce Cadillac vehicles with different or differently sourced components than originally scheduled. Since some options may be unavailable when your vehicle is assembled, we suggest that you verify that your vehicle includes the equipment you ordered or, if there are changes, that they are acceptable to you.

UPDATED SERVICE INFORMATION

Cadillac dealers receive useful service bulletins about Cadillac products. You may purchase them from Helm Incorporated by calling 1-800-551-4123 or by visiting www.helminc.com.

NEW-VEHICLE LIMITED WARRANTY

World-class coverage comes standard on every 2012 Cadillac. This warranty is for Cadillac vehicles registered in the U.S.A. See your Cadillac dealer for terms and conditions.

COVERED FOR 5 YEARS/100,000 MILES (WHICHEVER COMES FIRST)

Powertrain Limited Warranty with no deductible, Roadside Assistance Program,¹ Courtesy Transportation Program.¹

COVERED FOR 4 YEARS/50,000 MILES (WHICHEVER COMES FIRST)

Bumper-to-Bumper coverage
Tires – Defects in material and workmanship; Repairs made to correct any vehicle defect; Corrosion on body sheet metal panels.

HYBRID WARRANTY

In addition to the transferable Cadillac 4-year/50,000-mile (whichever comes first) New-Vehicle Limited Warranty and the 5-year/100,000-mile (whichever comes first) Powertrain Limited Warranty, GM will also warrant certain hybrid components on Escalade Hybrid models for 8 years/100,000 miles (whichever comes first). No deductibles are associated with the Escalade Hybrid limited warranty, which is transferable to any subsequent persons assuming ownership of the vehicle during the 8-year/100,000-mile warranty period. See your Cadillac dealer for details.

RUST THROUGH PROTECTION

Cadillac vehicles are designed and built to resist corrosion and rust-through corrosion. Any body sheet metal that rusts through (in the form of an actual hole in the sheet metal) is covered for six years unlimited mileage. Cosmetic or surface corrosion, resulting from stone chips or scratches in the paint, for example, is not included in the Rust Through coverage. Application of additional rust-inhibiting materials is not required under the Rust Through coverage and none is recommended. See your Cadillac dealer for terms of this limited warranty.

FLEET ORDERS Some standard content may be deleted with fleet orders. See dealer for details.

AN IMPORTANT NOTE ABOUT ALTERATIONS AND WARRANTIES Installations or alterations to the original equipment vehicle (or chassis) as distributed by General Motors are not covered by the General Motors New-Vehicle Limited Warranty. The special body company, assembler, equipment installer or upfitter is solely responsible for warranties on the body or equipment and any alterations (or any effect of the alterations) to any of the parts, components, systems or assemblies installed by GM. General Motors is not responsible for the safety or quality of design features, material or workmanship of any alterations by such suppliers.

1. Roadside Assistance Program and Courtesy Transportation Program are not a part of the New Vehicle Limited Warranty. A separate booklet entitled "Warranty and Owner Assistance Information" furnished with each new vehicle provides detailed warranty coverage information.

GM, the GM emblem, Cadillac, the Cadillac badge, OnStar, the OnStar emblem and the slogans, emblems, vehicle model names, vehicle body designs and other marks appearing in this catalog are the trademarks and/or service marks of General Motors, its subsidiaries, affiliates or licensors. iPod is a registered trademark of Apple, Inc. ©2011 General Motors. All rights reserved.